



Wynnewood

For : Michael Blay



in

spired Ideas

The company's principle of Architecture-Studio is the collective conception. From the very beginning, the practice has believed in virtues of exchange, crossing ideas, common effort, shared knowledge and enthusiasm.





Wynnewood is a modern residential apartment development located in the growing enclave of East Legon Hills, Accra. Designed to balance elegance, comfort, and functionality, the building comprises 11 thoughtfully planned apartment units arranged across four levels.

The ground, first, and second floors each accommodate three units i.e two 1-bedroom apartments and one 2-bedroom apartment per floor providing flexible living options for individuals, couples, and small families. Crowning the development are two exclusive penthouse apartments on the top floor, offering elevated privacy and expansive views of the surrounding neighbourhood.





Architecturally, Wynnewood is defined by its clean contemporary lines, warm material palette, and biophilic elements. Integrated balcony planters soften the façade while introducing greenery into private living spaces, enhancing both aesthetics and environmental comfort. Vertical wooden fins at the frontage serve as a striking visual feature, providing

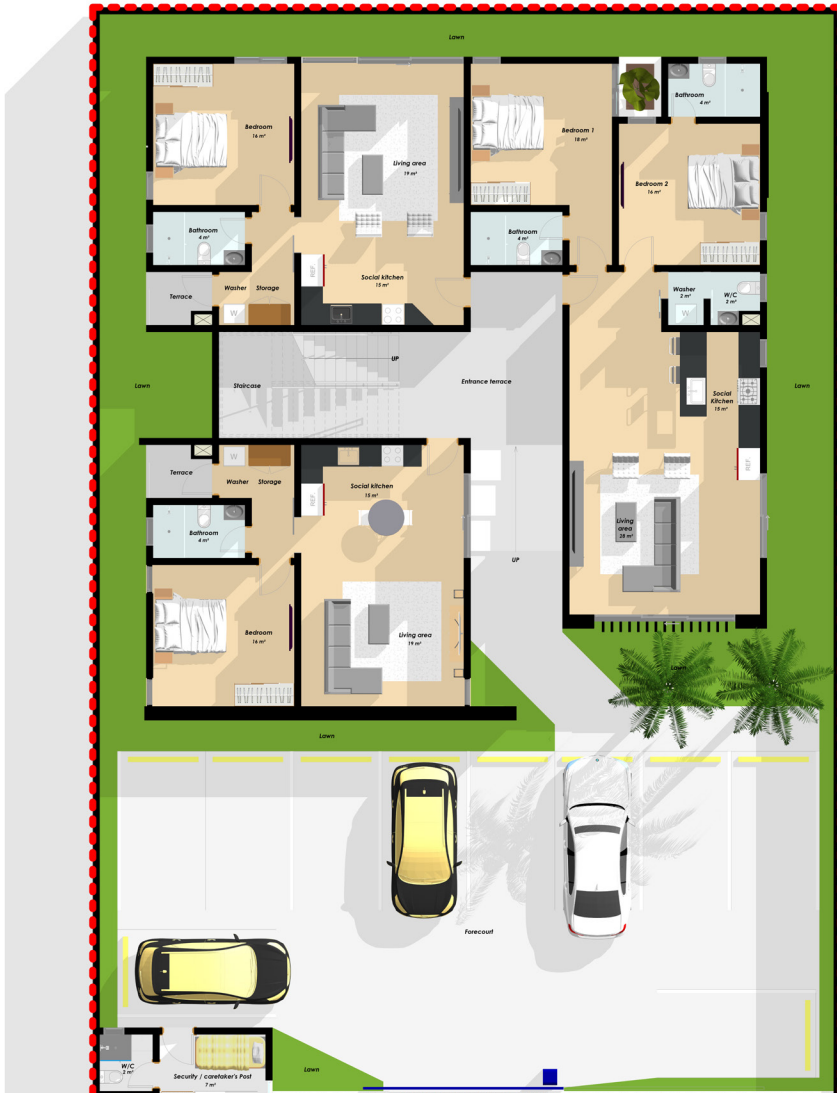
passive shading, privacy, and texture to the building's modern expression.

Wynnewood presents a refined urban living experience where thoughtful spatial planning meets contemporary design creating a tranquil residential retreat within Accra's fast-developing eastern corridor.

FLOOR PLANS

GROUND FLOOR

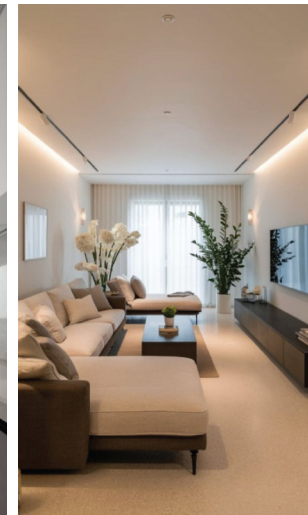
- » Living Area (3)
- » Two (2) ensuite bedrooms (18sqm)
- » Family area/ lounge
- » Front terrace with garden
- » Bedrooms with terrace
- » Security Post
- » Social Kitchen





The ground floor is designed as a refined yet functional living environment, emphasizing openness, clarity, and modern comfort. The living and dining areas flow seamlessly into a contemporary kitchen, unified by a restrained palette of warm wood tones, soft neutrals, and clean-lined finishes. Carefully integrated lighting combining recessed fixtures, linear accents, and feature pendants,

enhances spatial depth while maintaining a calm, elegant atmosphere. Private areas such as the bedroom and bathroom are treated with the same minimalist sophistication, using textured surfaces, bespoke joinery, and subtle contrasts to elevate everyday living. Overall, the ground floor balances practicality with understated luxury, creating a welcoming and timeless residential experience.



FIRST & SECOND FLOOR

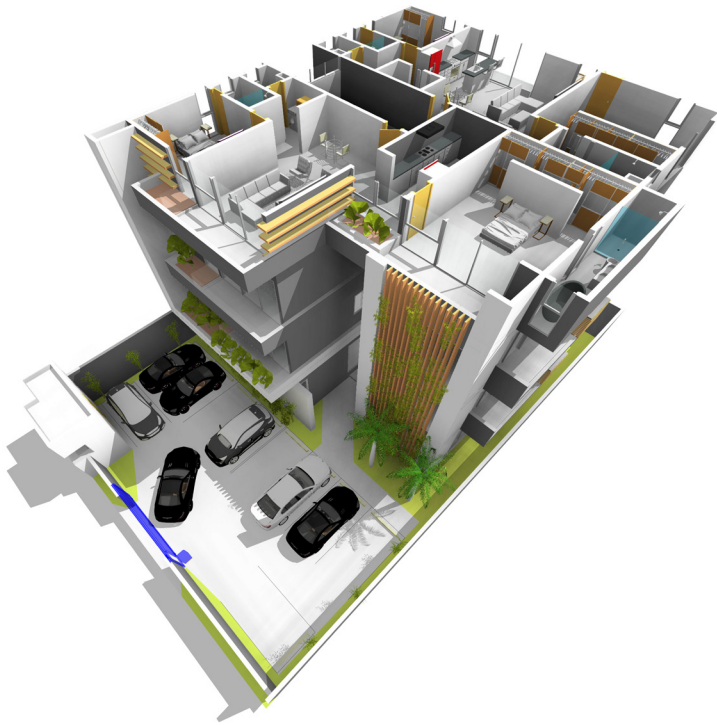


- » Bathtub
- » Balcony
- » Ensuite bedrooms (18sqm)
- » Family area/ lounge
- » Bedrooms with terrace
- » Social Kitchen

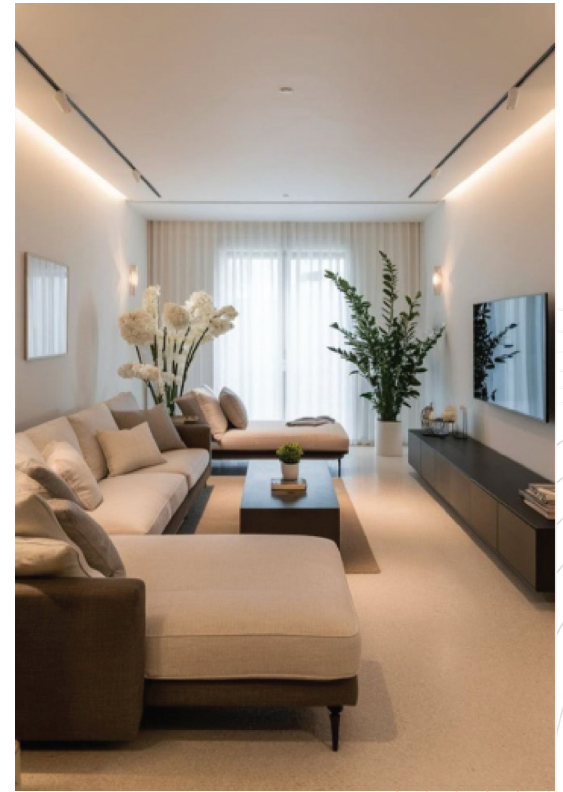


THIRD FLOOR

- » Master bedroom with walk-in closet (34sqm)
- » Bathhub
- » Double overhead shower in bathing cubicle for master
- » Family area/ lounge
- » Front terrace with garden



The penthouse floor is conceived as a refined private retreat, blending contemporary luxury with calm, natural warmth. The bedroom embraces soft neutral tones, layered textures, and ambient lighting to create a serene and intimate atmosphere. The en-suite bathroom is designed as a spa-like sanctuary, featuring sculptural fittings, premium stone finishes, and elegant brass accents that elevate everyday rituals.



Expansive glazing introduces natural light while maintaining privacy, and the balconies are lushly tropical planting offering a seamless connection between interior comfort relaxation.



LIVE THE MEMORIES

A space this soulful doesn't happen by accident. It is lovingly designed, masterfully layered, and waiting to become the backdrop of your most cherished moments.

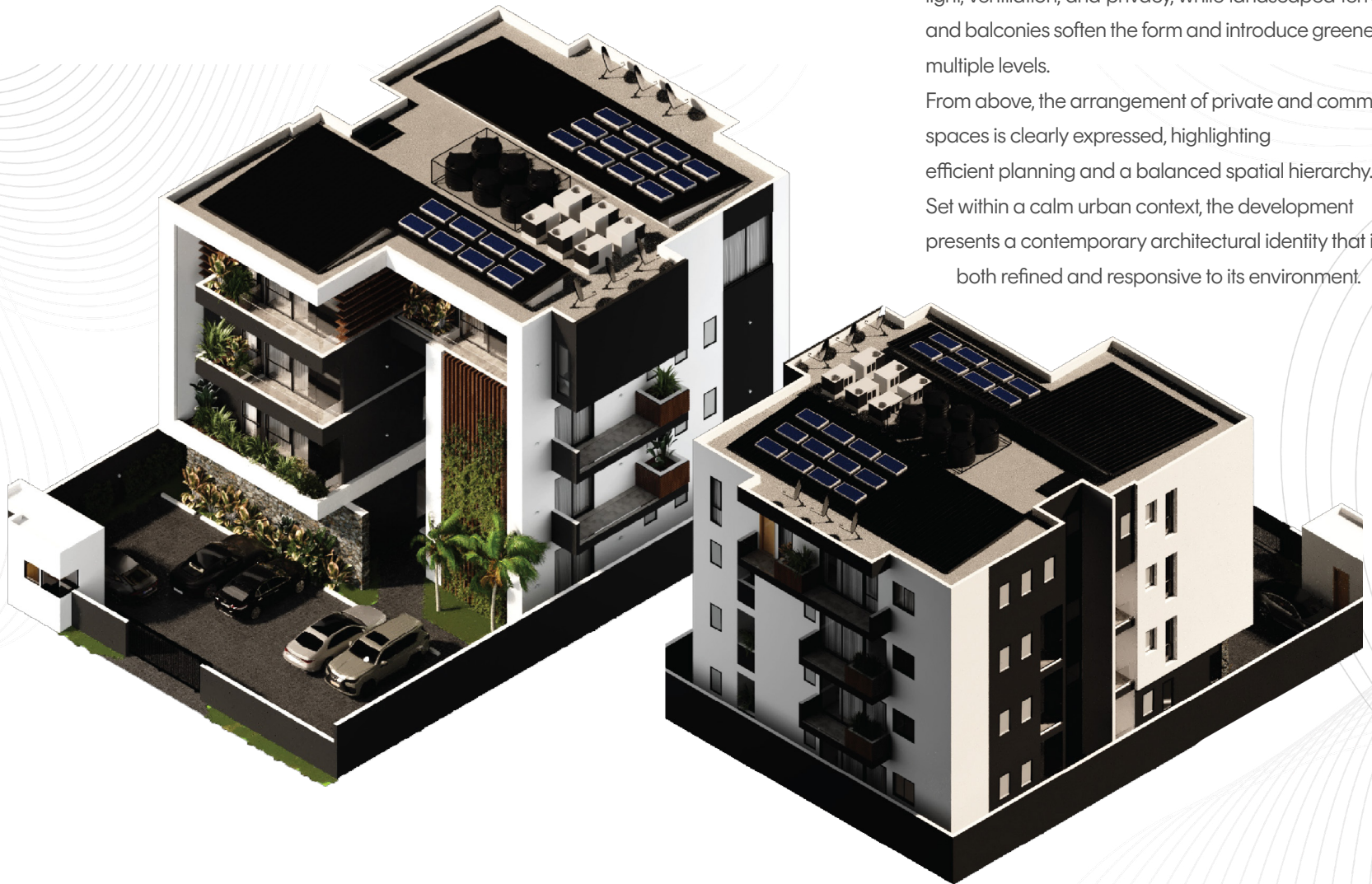


.... a refined urban
living experience
where thoughtful
spatial planning meets
contemporary design





AERIAL VIEWS



The aerial views reveal the apartment as a thoughtfully composed residential development, defined by clean architectural lines and a strong relationship to its surroundings. The building's massing is articulated to maximize light, ventilation, and privacy, while landscaped terraces and balconies soften the form and introduce greenery at multiple levels.

From above, the arrangement of private and communal spaces is clearly expressed, highlighting efficient planning and a balanced spatial hierarchy. Set within a calm urban context, the development presents a contemporary architectural identity that is both refined and responsive to its environment.





*Your home deserves to
feel this good*



Wynnewood

A GreyspaceLLC Project ©2026

CONTACT INFORMATION

info@thegreyspaces.com

+233 24 467 3830

www.thegreyspaces.com